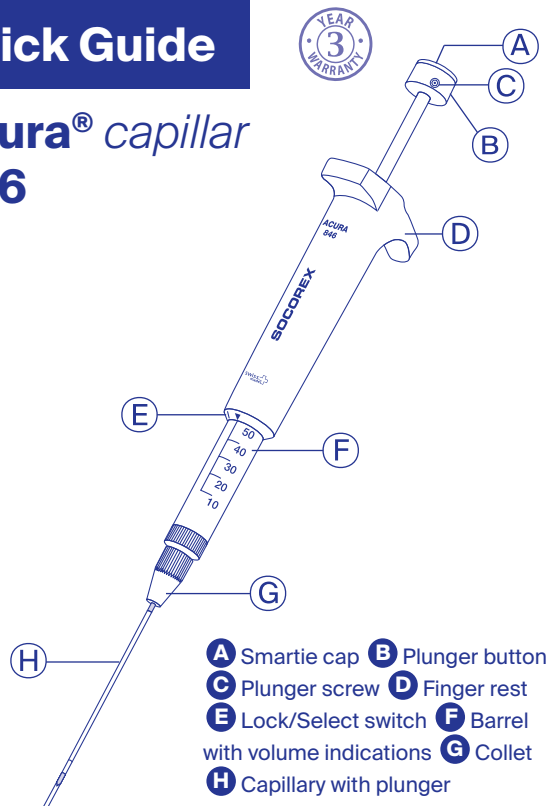


Quick Guide

Acura® capillar 846

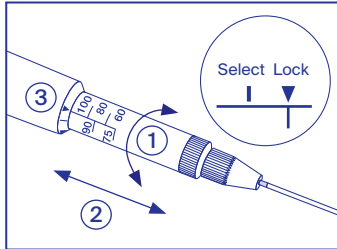


- A** Smartie cap
- B** Plunger button
- C** Plunger screw
- D** Finger rest
- E** Lock/Select switch
- F** Barrel with volume indications
- G** Collet
- H** Capillary with plunger

⚠ Safety precautions

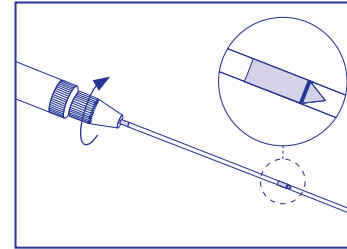
- Read carefully and observe manufacturer's instructions and guidelines.
- Refer to and follow regulations about handling of potentially hazardous reagents.
- Before use, check instrument for good working conditions.
- Do not use harsh chemicals (such as acetone) to clean instrument.
- Mind possible hand fatigue during serial pipetting and its medical consequences (such as repetitive strain injuries, RSI).
- Intended for laboratory use only.

Step-by-step instructions



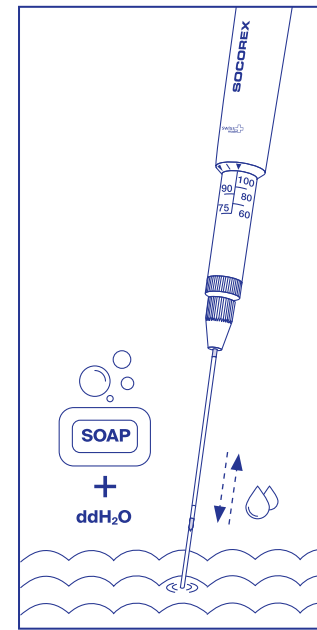
Volume setting

- 1) Unlock barrel by twisting.
- 2) Place selected graduation mark.
- 3) Lock into position.



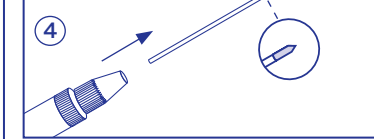
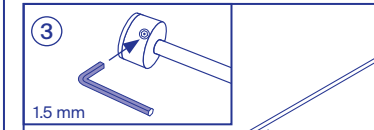
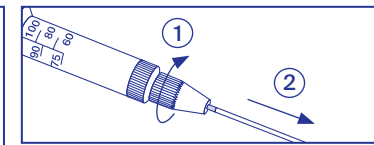
Capillary fitting

Loosen collet (G). Set pipette at max volume and insert capillary with colour mark first. Align flat end of plunger with black line. Re-tighten collet.



End of work

Discard capillary or rinse in distilled water or saline solution by operating plunger a few times.



Plunger replacement

- 1) Loosen collet.
- 2) Remove glass capillary.
- 3) Loosen screw with allen key.
- 4) Remove used plunger.
- 5) Turn pipette upside down and insert plunger until resistance. Repeat steps 3 to 1 to complete replacement. Control proper position of capillary.

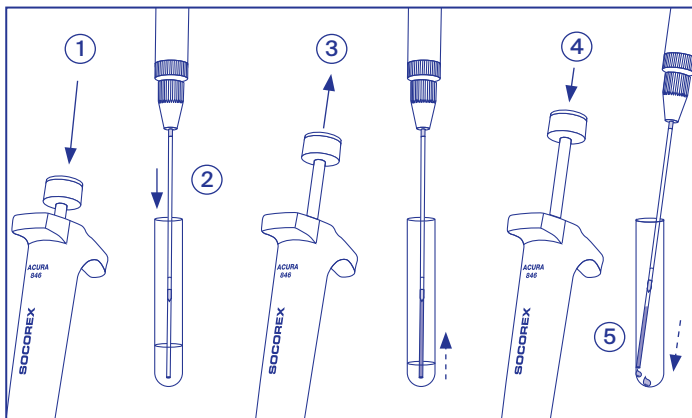


Related items	Volume range (colour)	Packaging	Cat. No.
Spare glass capillaries	1 – 5 µL (White)	200 / pk	341.005
	5 – 25 µL (2 x White)	200 / pk	341.025
	10 – 50 µL (Green)	200 / pk	341.050
	60 – 100 µL (Blue)	200 / pk	341.100
	100 – 200 µL (Red)	100 / pk	341.200
Spare stainless steel ETFE tipped plungers with capillaries	1 – 5 µL (White)	5 / pk	342.005
	5 – 25 µL (2 x White)	5 / pk	342.025
	10 – 50 µL (Green)	5 / pk	342.050
	60 – 100 µL (Blue)	5 / pk	342.100
	100 – 200 µL (Red)	5 / pk	342.200
Work station for 3 pipettes Acura® capillar 846		1 / pk	320.340



Package contents

Positive displacement pipette, one spare plunger, samples of glass capillaries, QC certificate, Quick Guide.



Dispensing

- 1) Depress plunger fully.
- 2) Immerse capillary into solution and release plunger slowly to aspirate.
- 3) Smoothly depress plunger, holding capillary against wall of receiving vessel to dispense.
- 4) Smoothly depress plunger, holding capillary against wall of receiving vessel to dispense.
- 5) Smoothly depress plunger, holding capillary against wall of receiving vessel to dispense.

Most common troubleshooting

Observation	Possible cause	Solution
Capillaries not fitting the pipette	Improperly attached capillary	Re-insert capillary
	Inadequate capillaries	Use original Socorex capillaries; make sure colour of plunger button and plunger rod match
Plunger sticking or dragging	Dirty or used plunger	Disassemble and clean plunger or replace with a new one
Pipetted volume differs from desired one	Capillary not properly positioned	Follow steps as described in <i>Capillary fitting</i> section

Scan to access operating instructions



EN / DE / FR